

THE STRONGEST LINK.

STAHL

When Next Day Isn't Good Enough.



You Need Our Speed of Service

A single day can cost a fortune.

R. STAHL can help provide the solution.

Just pick an explosion protected product in this brochure and we can ship it, same day.*

Plugs and Receptacles

Control Stations

Explosion Proof Boxes

Terminal Boxes

800.782.4357 • www.rstahl.com

Our Houston-based customer service team is ready. Contact us today at 800.782.4357 or www.rstahl.com

Class I, Division 2, ATEX / IECEx Zone 1 Globally Certified Terminal Boxes

Cat #	L (in)	W (in)	D (in)	Term Size (mm ²)	Max Term Allowed	Wire Range (AWG)
8150/1-0176-0116-091-3311	6.93	4.59	3.58	2.5	16	26-12
8150/1-0200-0300-150-3321	11.81	7.87	5.91	2.5	105	26-12
8150/1-0400-0300-150-3311	11.81	15.75	5.91	2.5	229	26-12
8150/1-0300-0400-150-3321	15.75	11.81	5.91	2.5	229	26-12
8150/1-0300-0400-230-3321	15.75	11.81	9.05	2.5	229	26-12
8150/1-0360-0360-150-3321	14.17	14.17	5.91	2.5	188	26-12
8150/1-0360-0550-230-3321	21.65	14.17	9.05	2.5	443	26-12
8150/1-0400-0400-150-3321	15.75	15.75	5.91	2.5	306	26-12
8150/1-0400-0400-230-3321	15.75	15.75	9.05	2.5	306	26-12
8150/1-0400-0600-230-3321	23.62	15.75	9.05	2.5	490	26-12
8150/1-0480-0787-230-3321	30.98	18.90	9.05	2.5	833	26-12
8150/1-0600-0600-150-3321	23.62	23.62	5.91	2.5	735	26-12
8150/1-0600-0600-230-3321	23.62	23.62	9.05	2.5	735	26-12



Bold items IN STOCK¹
All others 5 days or less

¹Bold Items are IN STOCK with 1 terminal. Add terminals, punch holes WITHOUT voiding the certification!
All unbold items will ship with punched holes and terminals to specifications within 5 days.

*In accordance with the installation manual provided by R. STAHL.

Class I, Division 1, ATEX / IECEx Zone 1 Explosion Proof Enclosures

Cat #	L (internal) (in)	W (internal) (in)	D (internal) (in)
8264/6114-3	6.18	6.18	7.95
8264/6214-3	11.02	6.10	7.95
8264/6224-3	11.02	11.02	7.95
8264/6225-3	11.02	11.02	10.83
8264/6325-3	15.83	11.02	10.24
8264/6335-3	15.83	15.83	10.16
8264/6935-3	25.59	15.83	8.66
8264/6995-3	25.20	25.20	9.84

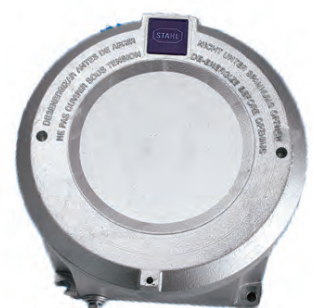
IN STOCK



Class I, Division 1, ATEX / IECEx Zone 1 Explosion Proof Enclosures

Cat #	L (internal) (in)	W (internal) (in)	D (internal) (in)
8265/62-0000	5.16	5.16	3.66
8265/63-0000	6.73	6.73	5.24
8265/64-0000	8.35	8.35	7.26
8265/66-0000	11.18	11.18	9.00

IN STOCK



*Also stocked with windows. Consult factory for details.

800.782.4357 • www.rstahl.com

Choose same day selection of products from control stations, distribution panels, plugs, and receptacles.

Class I, Division 2, Class II, Division 2, Z-Purge Indicator

Cat #	Description
8626/1-DZS2A-005POB	Z Purge, Alum, 24VDC, Small, Manual Compensation
8626/1-DZS2A-005TOB	Z Purge, Alum, 24VDC, Small, Continuous Dilution
8626/1-DZS3A-005POB	Z Purge, Alum, 120VAC, Small, Manual Compensation
8626/1-DZS3A-005TOB	Z Purge, Alum, 120VAC, Small, Continuous Dilution
8626/1-DZM2A-005PSB	Z Purge, Alum, 24VDC, Medium, Manual Compensation, Side Vent
8626/1-DZM2A-005PTB	Z Purge, Alum, 24VDC, Medium, Manual Compensation, Top Vent
8626/1-DZM2A-005TSB	Z Purge, Alum, 24VDC, Medium, Continuous Dilution, Side Vent
8626/1-DZM2A-005TTB	Z Purge, Alum, 24VDC, Medium, Continuous Dilution, Top Vent

IN STOCK



Class I, Division 1, Fire Alarm Stations

Cat #	Description
XPPS/04-11-20-31-41	3/4" NPT Key Lock Reset, Red
XPPS/04-12-20-31-41	3/4" NPT Hex Key Reset, Red
XPPS/04-12-21-31-41	3/4" NPT Hex Key Reset, Lift and Pull, Red
XPPS/04-12-22-31-41	3/4" NPT Hex Key Reset, Break Glass, Red

IN STOCK



Class I, Division 1, Class II, Division 1, ATEX Zone 1 Yodalex

Cat #	Description
YL60/B/D50/C/UL	Yodalex 24VDC Clear
YL60/B/D50/A/UL	Yodalex 24VDC Amber
YL60/B/D50/R/UL	Yodalex 24VDC Red
YL60/B/D50/B/UL	Yodalex 24VDC Blue
YL60/B/L50/A/UL	Yodalex 115 VAC Amber
YL60/B/L50/R/UL	Yodalex 115 VAC Red

IN STOCK



IP 65 Global Non-Hazardous Combination Horn/Strobe

Cat #	Description
1ULL50308	YL50/D50/R/RF/UL Red lens 24VDC
1ULL50307	YL50/D50/A/RF/UL Amber lens 24VDC
1ULL50304	YL50/L50/R/RF/UL Red lens 115VAC
1ULL50313	YL50/L50/A/RF/UL Amber lens 115VAC

IN STOCK



Class I, Division 2, ATEX / IECEx Zone 1 FRP Control Stations with 3/4" Dead End Conduit Hub

Cat #	Description (all 3/4" dead end hub)
8040/114-Y150	Compact Maintained Mushroom Head 1NC
8040/124-C150	Standard Maintained Mushroom Head 2NC
8040/114-U2312	Compact Start- Stop 1NO/1NC
8040/124-N021	2-Pos, 2 Pole Selector "OFF-ON" Maintained
8040/114-PLR0	Compact Red LED Pilot Light
8040/114-PLG0	Compact Green LED Pilot Light
8040/124-N273	3-Pos, 2- Pole Selector "H-O-A" Maintained
8040/224-U011-U012	Standard, Start Stop

IN STOCK



Class I, Division 2, ATEX / IECEx Zone 1 Stainless Steel Control Stations with 3/4" Dead End Conduit Hub

Cat #	Description (all 3/4" dead end hub)
8150/5-124-C150	Standard Maintained Mushroom Head 2NC
8150/5-124-N021	2-Pos, 2 Pole Selector "OFF-ON" Maintained
8150/5-124-N273	3-Pos, 2- Pole Selector "H-O-A" Maintained
8150/5-224-U011-U012	Standard, Start Stop

IN STOCK



Class I, Division 2, ATEX / IECEx Zone 1 Plugs and Receptacles

Receptacle #	Plug #	Amps	Volts	Pole/Wire
8570/21-304	8570/22-304	20	125	2P, 3W
8570/21-407	8570/22-407	20	480	3P, 4W
8571/21-407	8571/22-407	30	480	3P, 4W
8579/41-407	8579/22-407	63	480	3P, 4W

IN STOCK



Zener Diode Barriers

Cat #	Description
9002/13-280-110-001	AI/DI
9001/01-280-100-101	AO/DO
9002/77-093-300-001	T/C
9002/22-032-300-111	RTD



Galvanic Isolators

Cat #	Description
9170/20-11-11s	Switch Repeater DC
9170/20-12-21s	Switch Repeater AC
9160/23-11-11s	Transmitter Supply Unit
9165/16-11-11s	Analog Output w/ HART
9175/20-16-11s	Discrete Output

IN STOCK



R. STAHL, Inc.
 13259 N. Promenade Blvd
 Stafford, TX 77477
 USA
 800.782.4357
 832.539.6700

R. STAHL, LTD.
 7003-56th Ave.
 Edmonton, AB T6B 3L2
 Canada
 877.416.4302
 Fax: 780.469.5525

800.782.4357 • www.rstahl.com